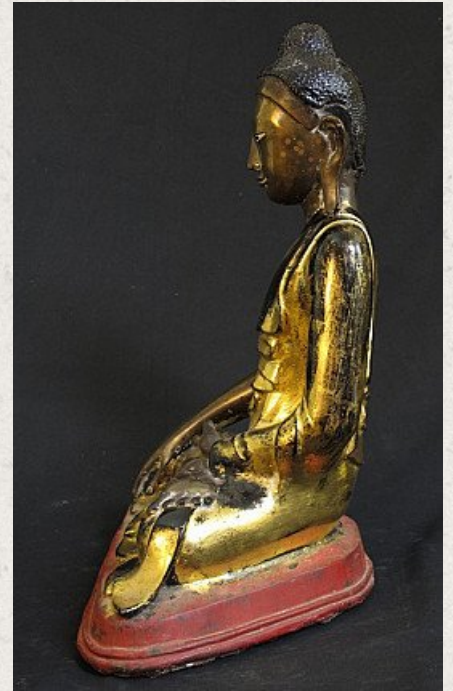
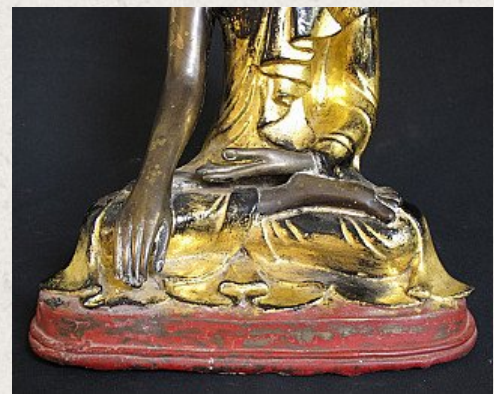
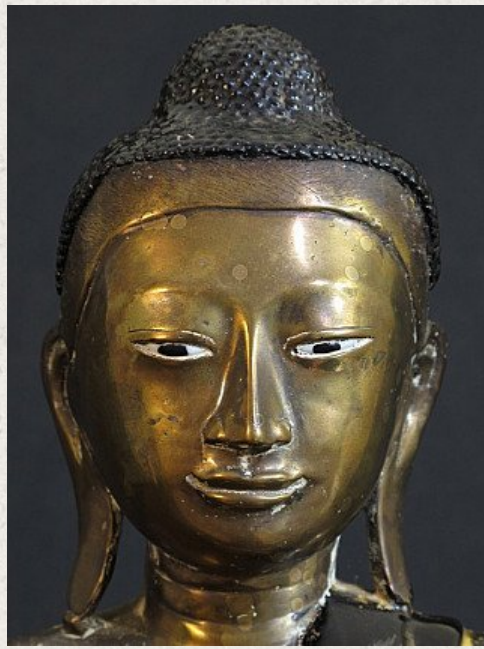


19th century Mandalay Buddha

- Material : bronze
- 43,5 cm high
- Mandalay style
- Bhumisparsha mudra
- 19th century
- Traces of repairs on the shoulder
- Goldplated with 24 krt. gold
- Eyes are made of porcelain
- Originating from Burma
- Nr: 2585-1





[See on website](#)