

Special pair of antique stone Temple lions

- Material : stone
- 47 cm high
- 20 cm wide and 33 cm deep
- Ava style
- 16th century
- Were originally placed at the entrance of a stupa or temple
- Very rare, it is very special to find a complete set in this condition, originally from the period !
- Weight: 54,35 kgs
- Originating from Burma
- Nr: 3666-32-A-B

Rielerweg 71-73

7416 ZB Deventer

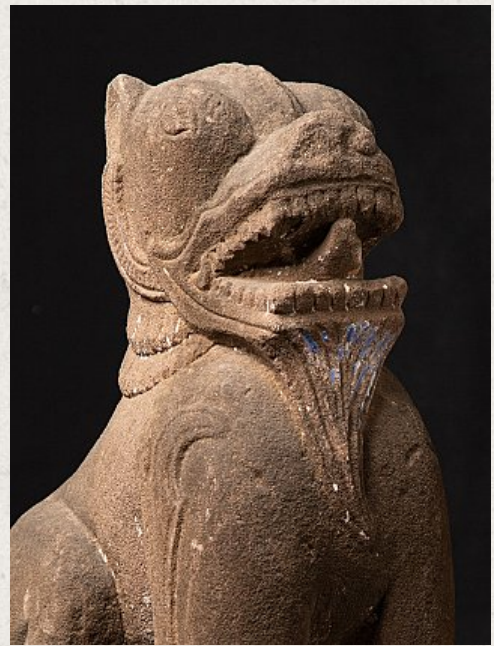
The Netherlands

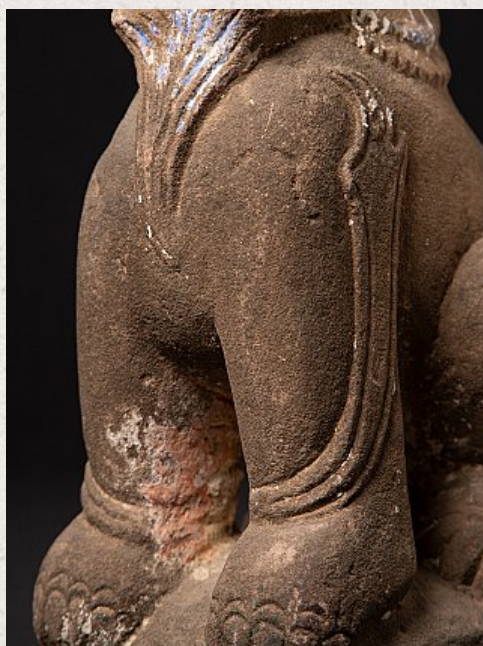
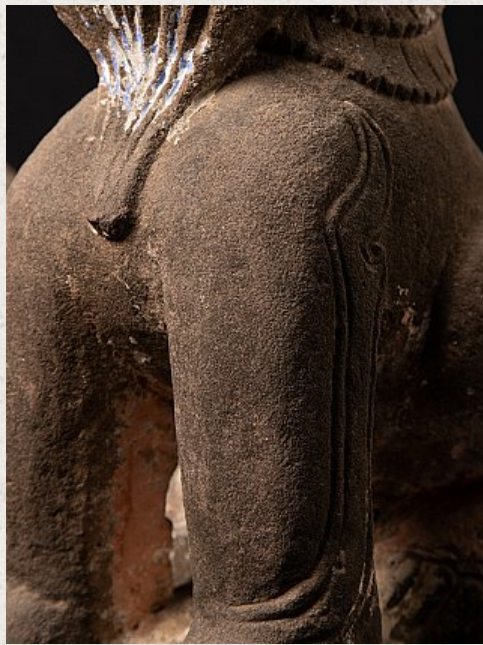
www.originalbuddhas.com

info@originalbuddhas.com

+31-6-22192241









[See on website](#)