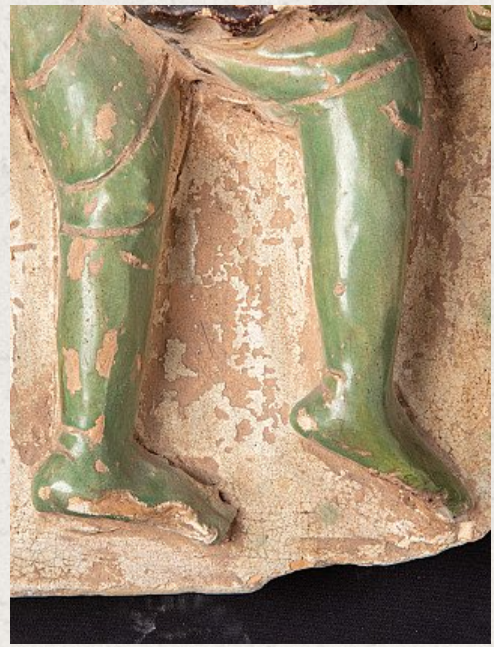


# Antique Tile with Maras soldiers

- Material: Glazed pottery
- 51 cm high
- 35,3 cm wide and 12,5 cm thick
- 15th century
- Probably from the Shwegugyi temple in Pegu, Mon state
- Originating from Burma
- Nr: UL-01

Rielerweg 71-73  
7416 ZB Deventer  
The Netherlands  
[www.originalbuddhas.com](http://www.originalbuddhas.com)  
[info@originalbuddhas.com](mailto:info@originalbuddhas.com)  
+31-6-22192241





[See on website](#)